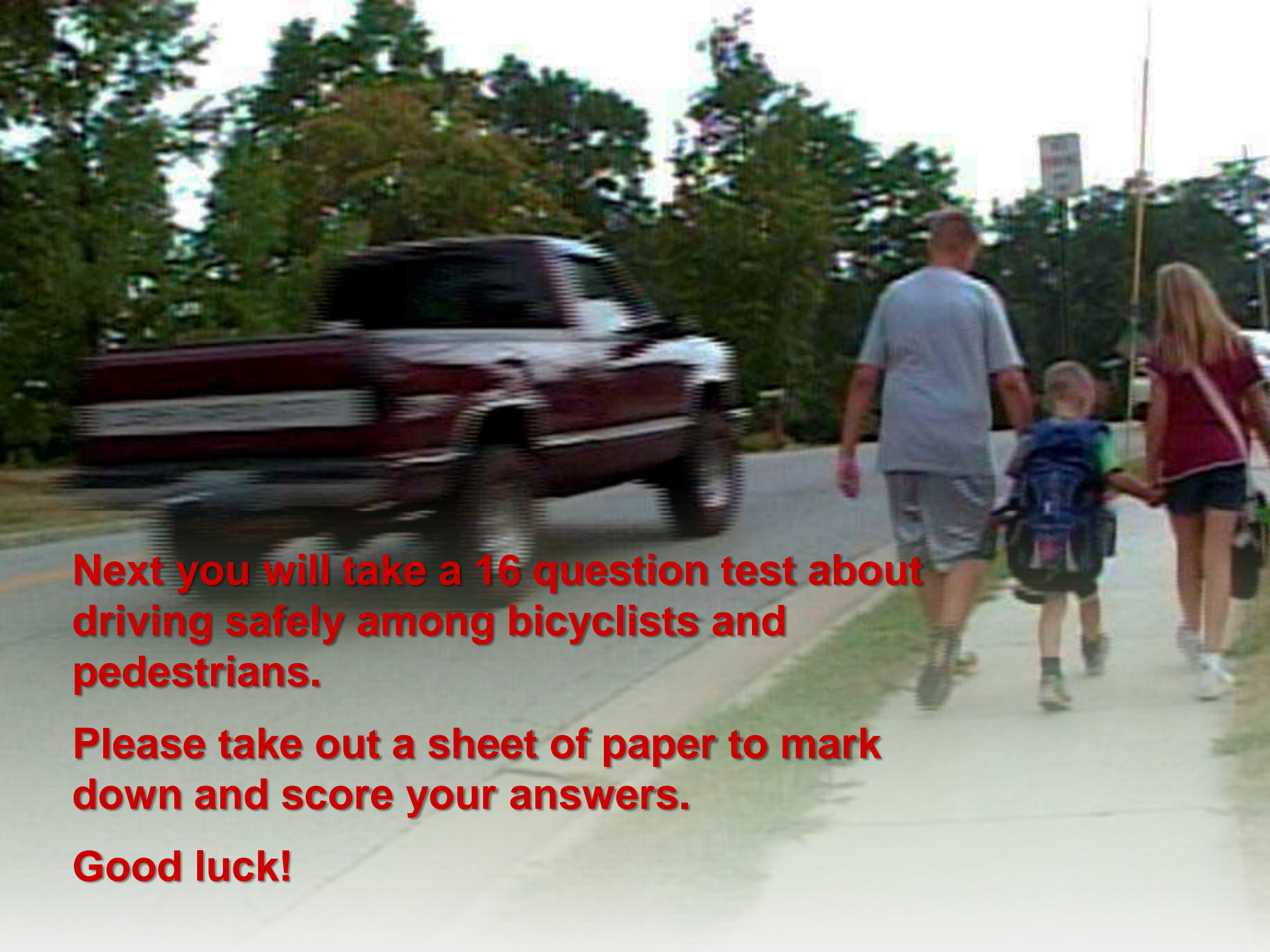




**TEST ON**  
**Driving Safely**  
**Among Bicyclists and**  
**Pedestrians**



A photograph showing a blurred red pickup truck driving past a family of three walking on a sidewalk. The family consists of a man in a grey t-shirt and shorts, a young child with a blue backpack, and a woman in a maroon shirt and dark shorts. The background features green trees and a utility pole.

**Next you will take a 16 question test about driving safely among bicyclists and pedestrians.**

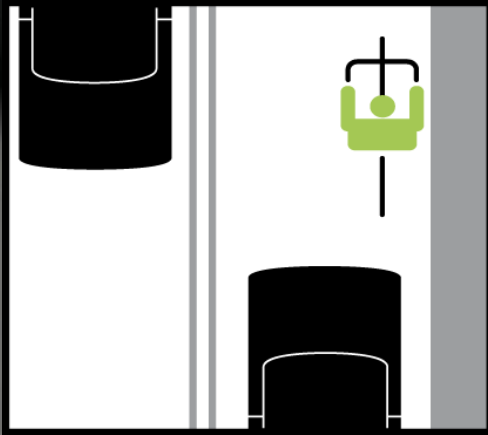
**Please take out a sheet of paper to mark down and score your answers.**

**Good luck!**

**1 Bicyclists have a legal right to do which of the following:**

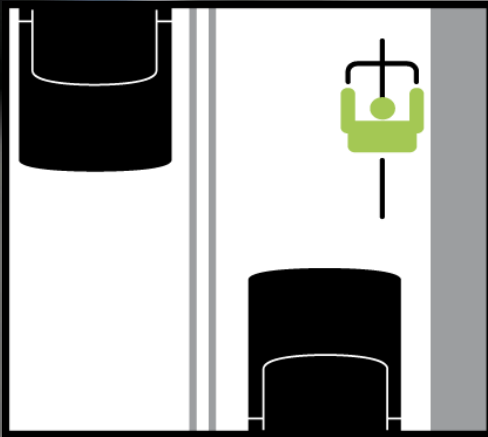


1 Bicyclists have a legal right to do which of the following:

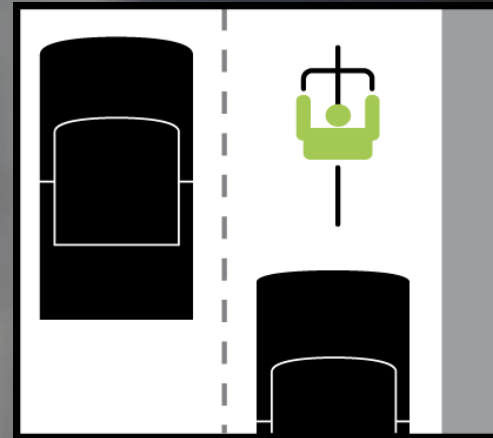


a. Ride on a roadway

**1 Bicyclists have a legal right to do which of the following:**

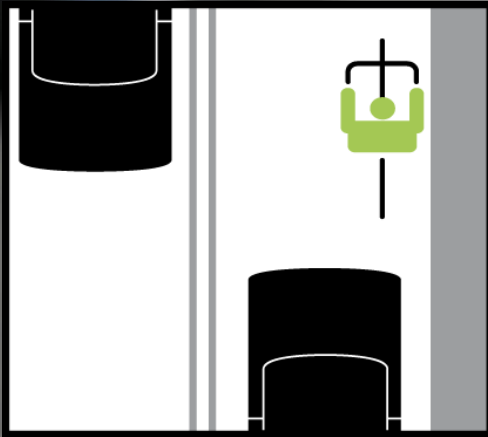


a. Ride on a roadway

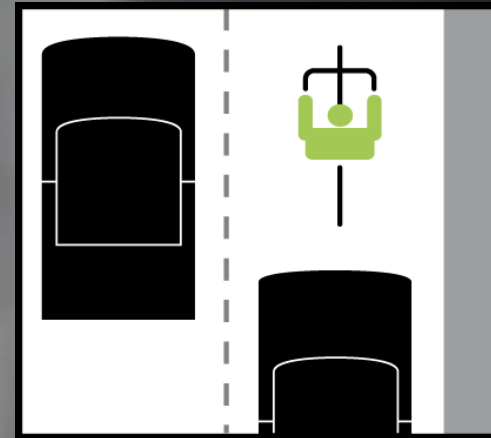


b. Occupy a lane

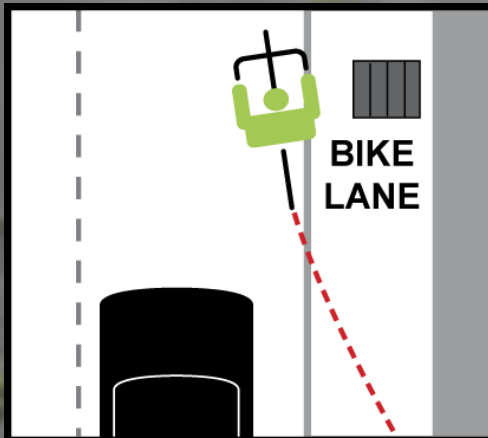
# 1 Bicyclists have a legal right to do which of the following:



a. Ride on a roadway

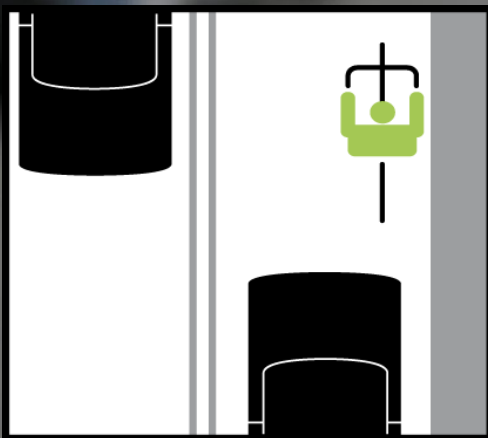


b. Occupy a lane

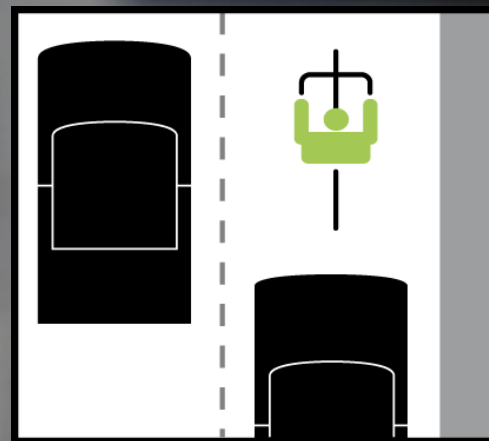


c. Ride out of a bike lane to avoid an obstruction

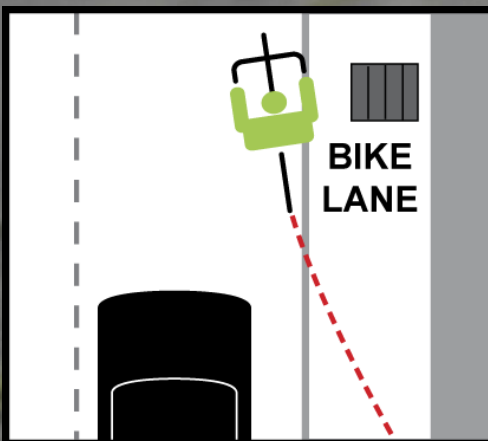
# 1 Bicyclists have a legal right to do which of the following:



a. Ride on a roadway



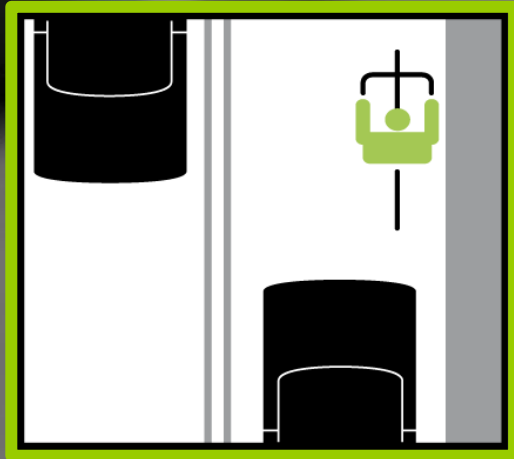
b. Occupy a lane



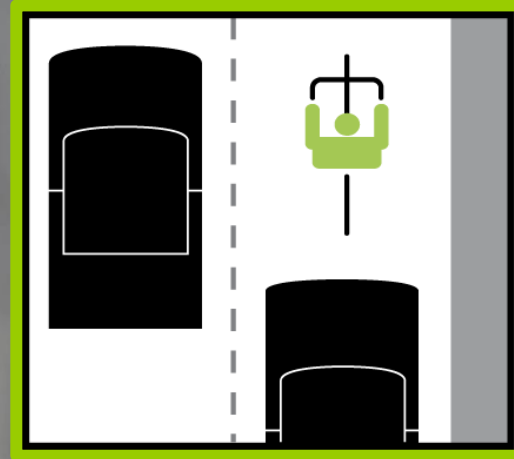
c. Ride out of a bike lane to avoid an obstruction

d. ALL are correct

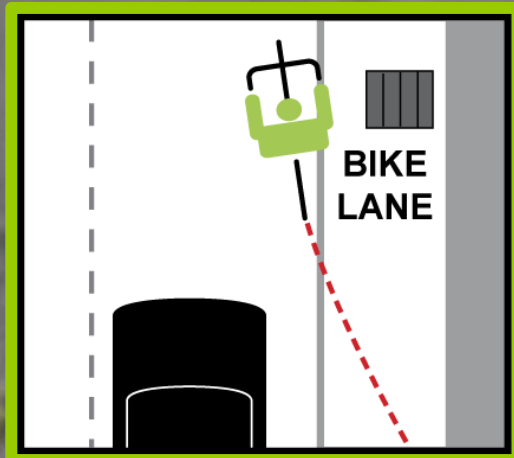
# 1 Bicyclists have a legal right to do which of the following:



a. Ride on a roadway



b. Occupy a lane



c. Ride out of a bike lane to avoid an obstruction

d. ALL are correct

ANSWER:

**d. ALL are correct!**

**Bicycles are vehicles in Washington and have the right to use the road even if a bicycle lane is present.**



## 2 True or False?

A pedestrian walks out across the street (jaywalking) 20 feet in front of the car. The driver may proceed without reducing speed since he has the right of way over a jaywalker.



*Pedestrian crossing the street mid-block*

## 2 True or False?

A pedestrian walks out across the street (jaywalking) 20 feet in front of the car. The driver may proceed without reducing speed since he has the right of way over a jaywalker.



*Pedestrian crossing the street mid-block*

**FALSE!**

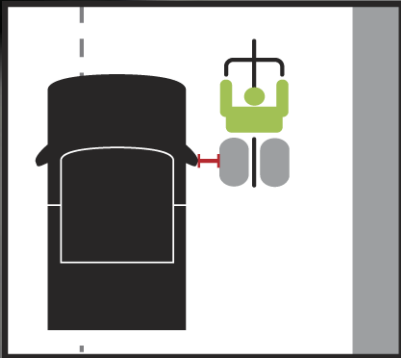
**ANSWER:**

**FALSE!**

The law requires that the motorists proceed with due care regardless of the right of way.

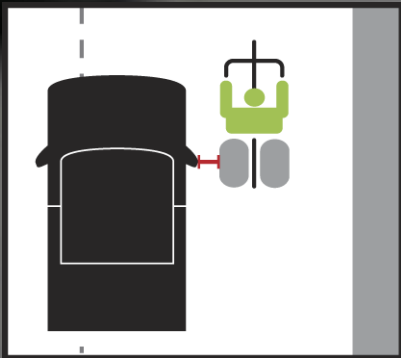
**3 What is the minimum distance a driver should maintain between the car and a bicyclist when passing a bicyclists on a roadway or in a bicycle lane?**

**3 What is the minimum distance a driver should maintain between the car and a bicyclist when passing a bicyclists on a roadway or in a bicycle lane?**

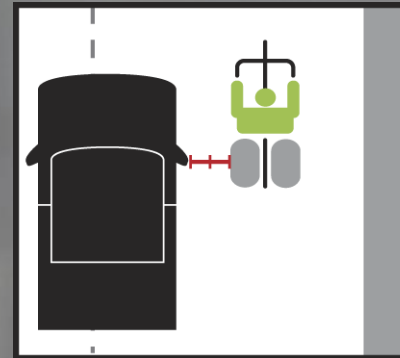


- a. At least 1 foot from the widest point of both the car and bicycle

**3 What is the minimum distance a driver should maintain between the car and a bicyclist when passing a bicyclists on a roadway or in a bicycle lane?**

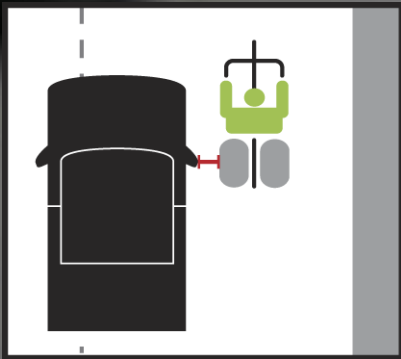


a. At least 1 foot from the widest point of both the car and bicycle

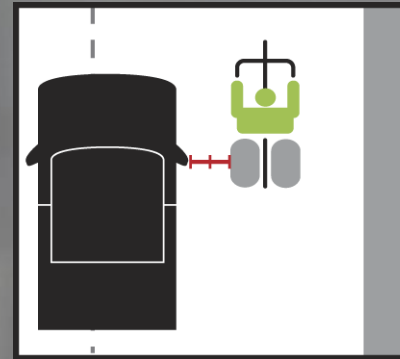


b. At least 2 feet from the widest point of both the car and bicycle

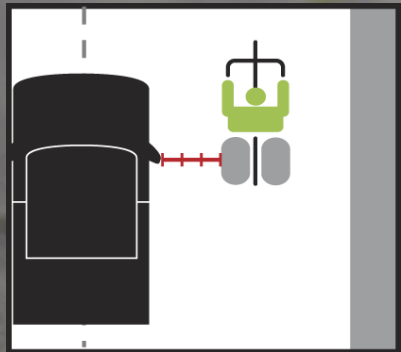
### 3 What is the minimum distance a driver should maintain between the car and a bicyclist when passing a bicyclist on a roadway or in a bicycle lane?



a. At least 1 foot from the widest point of both the car and bicycle

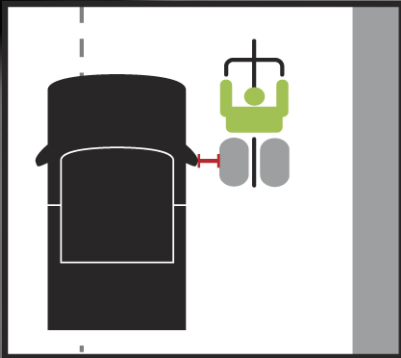


b. At least 2 feet from the widest point of both the car and bicycle

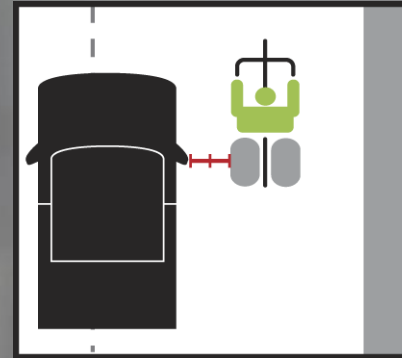


c. At least 3 feet from the widest point of both the car and bicycle

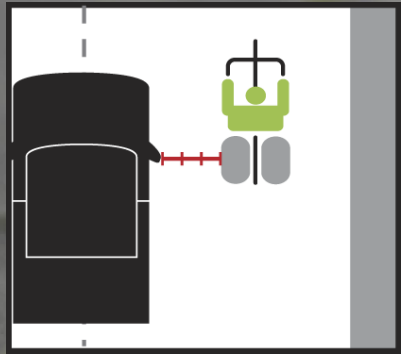
### 3 What is the minimum distance a driver should maintain between the car and a bicyclist when passing a bicyclists on a roadway or in a bicycle lane?



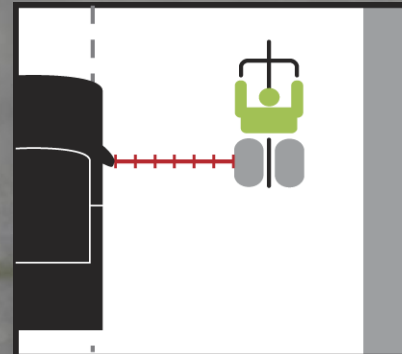
a. At least 1 foot from the widest point of both the car and bicycle



b. At least 2 feet from the widest point of both the car and bicycle



c. At least 3 feet from the widest point of both the car and bicycle



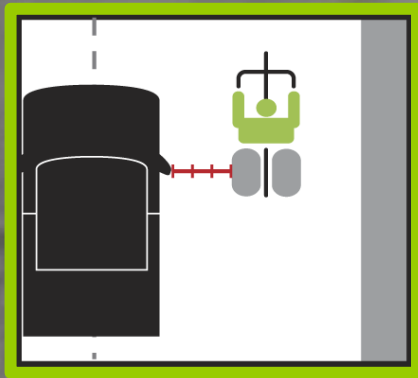
d. At least 6 feet from the widest point of both the car and bicycle

3 What is the minimum distance a driver should maintain between the car and a bicyclist when passing a bicyclists on a roadway or in a bicycle lane?

ANSWER:

C is correct!

Three feet from the widest point of both vehicles is the minimum safe passing distance at slow speeds. More space should be provided at speeds over 30 mph. If necessary to provide safe passing, the motorist must wait for the traffic to clear.



c. At least 3 feet from the widest point of both the car and bicycle



## 4 True or False?

**Distractions create the greatest risk for hitting a pedestrian or bicyclist.**



*Focusing on passengers while driving*



*Talking on a cell phone or texting while driving*



*Adjusting the car stereo while driving*



*Eating while driving*

## 4 True or False?

Distractions create the greatest risk for hitting a pedestrian or bicyclist.



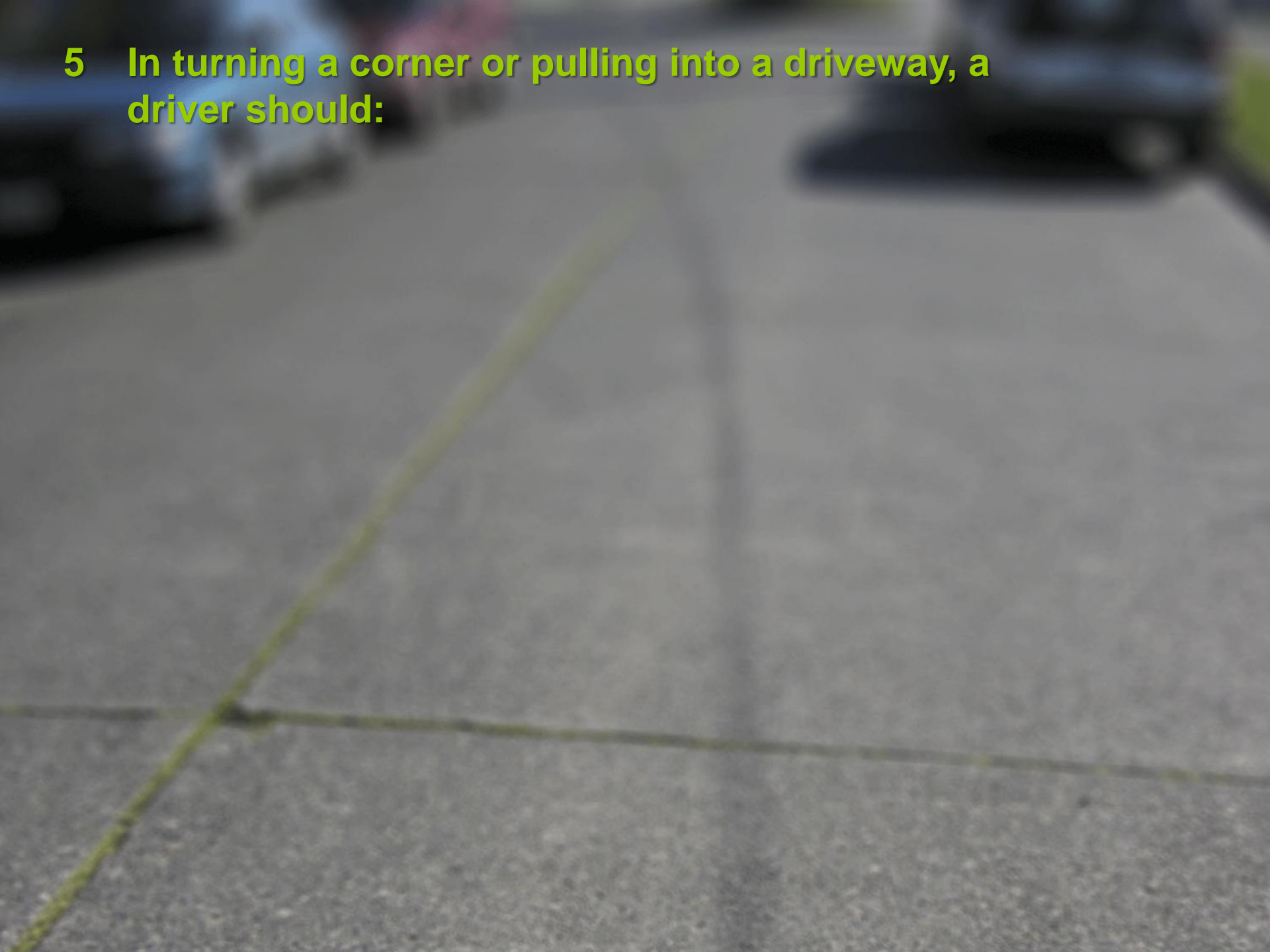
TRUE!

ANSWER:

True!

Inattention from distractions is the leading cause of collisions with pedestrians or bicyclists.

**5 In turning a corner or pulling into a driveway, a driver should:**



**5 In turning a corner or pulling into a driveway, a driver should:**



- a. Yield to oncoming bicyclists rather than rushing to beat the bicyclist.

## 5 In turning a corner or pulling into a driveway, a driver should:



a. Yield to oncoming bicyclists rather than rushing to beat the bicyclist.



b. Watch for pedestrians or bicyclists who are in the crosswalk or on the adjacent sidewalk.

## 5 In turning a corner or pulling into a driveway, a driver should:



- a. Yield to oncoming bicyclists rather than rushing to beat the bicyclist.



- b. Watch for pedestrians or bicyclists who are in the crosswalk or on the adjacent sidewalk.



- c. Check blindspot and side mirror to make sure a bicyclist is not beside the car.

## 5 In turning a corner or pulling into a driveway, a driver should:



a. Yield to oncoming bicyclists rather than rushing to beat the bicyclist.



b. Watch for pedestrians or bicyclists who are in the crosswalk or on the adjacent sidewalk.



d. ALL are correct

c. Check blindspot and side mirror to make sure a bicyclist is not beside the car.

## 5 In turning a corner or pulling into a driveway, a driver should:



- a. Yield to oncoming bicyclists rather than rushing to beat the bicyclist.



- b. Watch for pedestrians or bicyclists who are in the crosswalk or on the adjacent sidewalk.



- c. Check blindspot and side mirror to make sure a bicyclist is not beside the car.

- d. ALL are correct

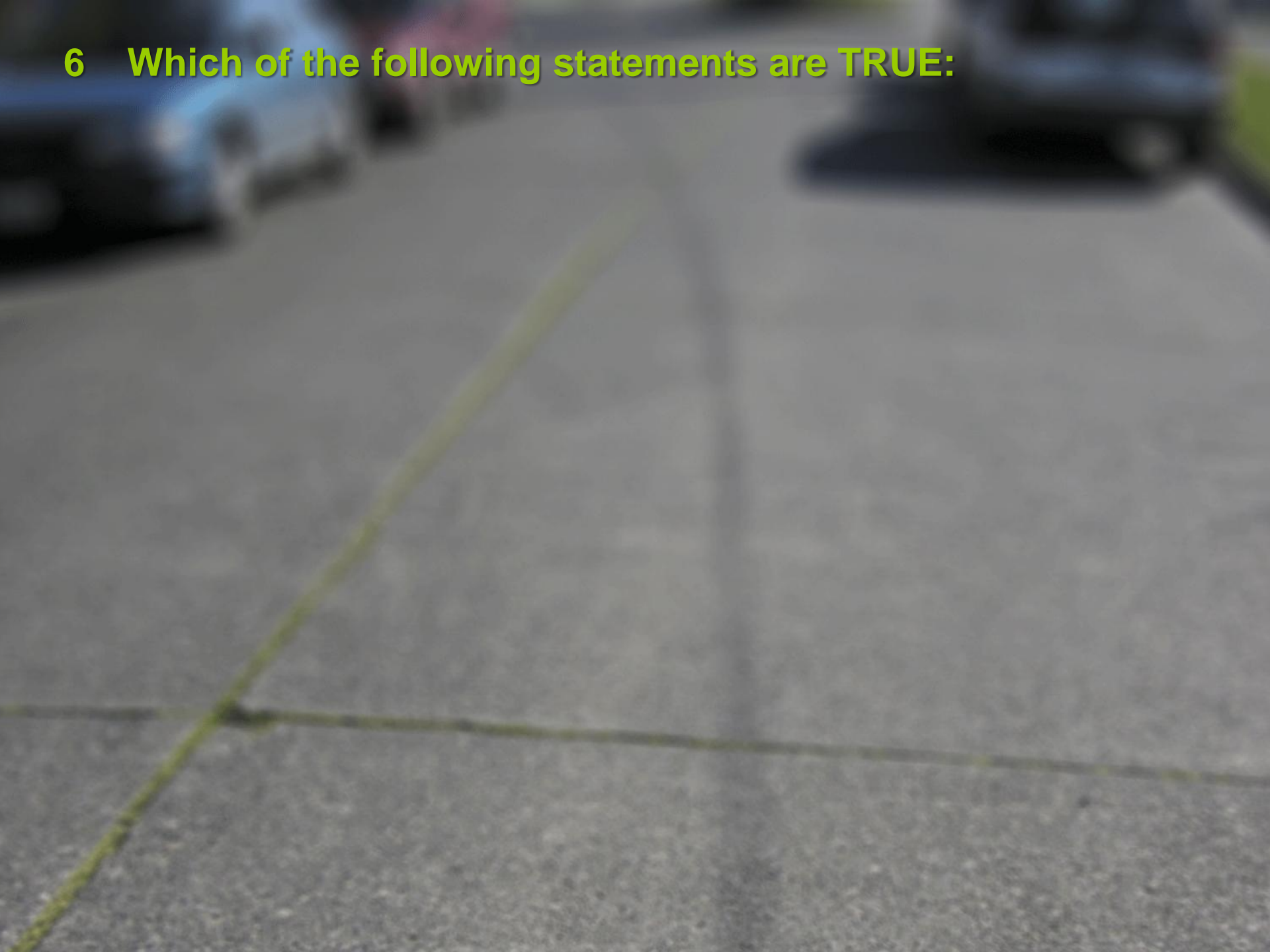
ANSWER:

**d. ALL are correct!**

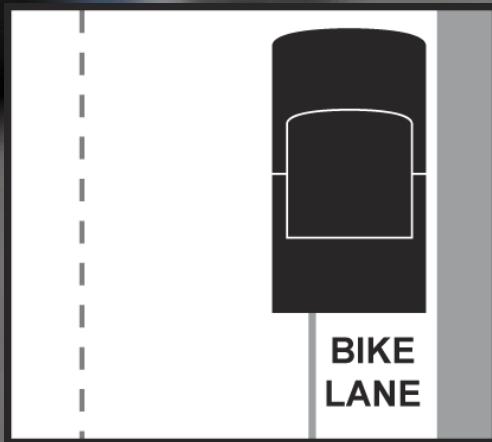
**You must be on your lookout because bicyclists and pedestrians can be hard to see and are vulnerable users.**



6 Which of the following statements are TRUE:

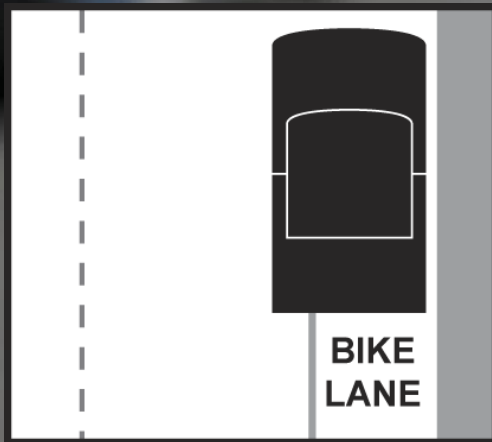


6 Which of the following statements are TRUE:

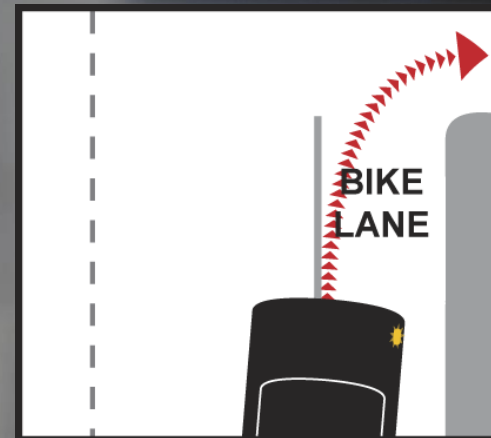


- a. Motor vehicles may park in bicycle lanes.

## 6 Which of the following statements are TRUE:

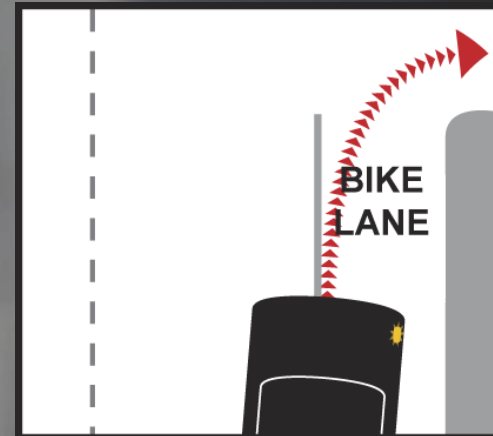
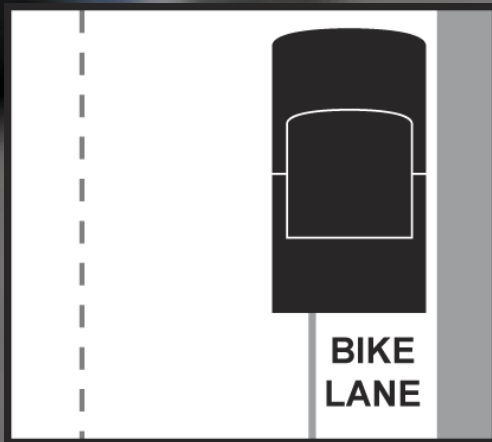


a. Motor vehicles may park in bicycle lanes.



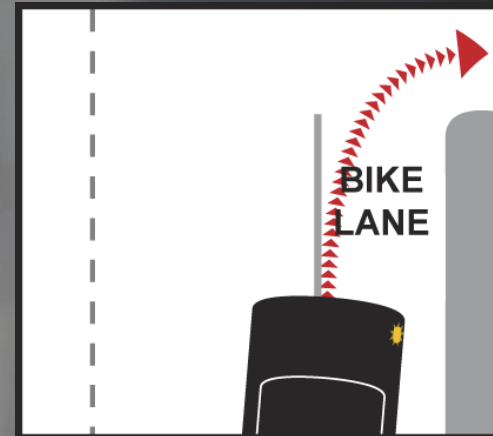
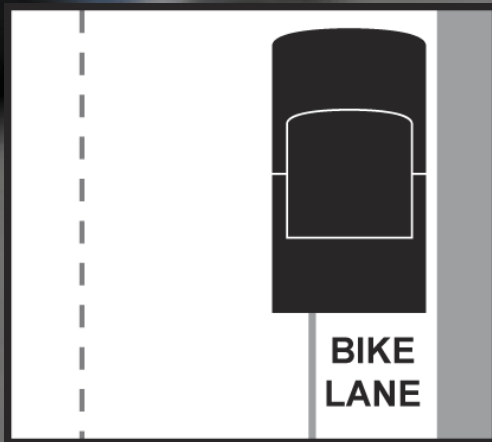
b. Motor vehicles may cross bicycle lanes with solid dividing lines to turn.

## 6 Which of the following statements are TRUE:



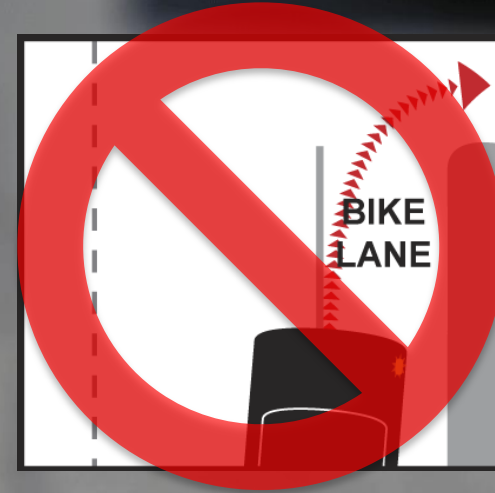
- a. Motor vehicles may park in bicycle lanes.
- b. Motor vehicles may cross bicycle lanes with solid dividing lines to turn.
- c. Both are true.

## 6 Which of the following statements are TRUE:



- a. Motor vehicles may park in bicycle lanes.
- b. Motor vehicles may cross bicycle lanes with solid dividing lines to turn.
- c. Both are true.
- d. Both are false.

## 6 Which of the following statements are TRUE:



- a. Motor vehicles may park in bicycle lanes.
- b. Motor vehicles may cross bicycle lanes with solid dividing lines to turn.
- c. Both are true.
- d. Both are false.

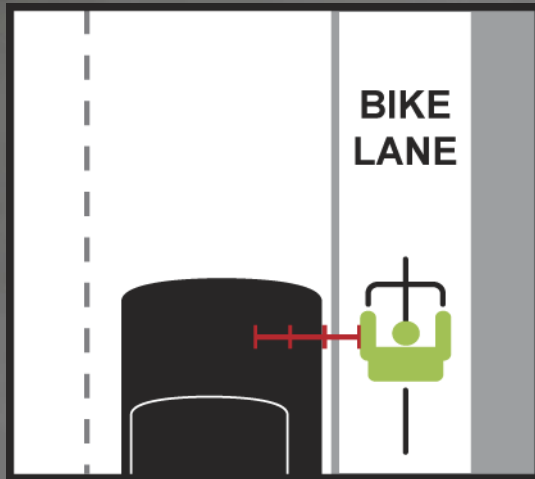
ANSWER:

**d. Both are FALSE!**

State and local laws prohibit parking and driving in bicycle lanes. A motor vehicle may cross a bicycle lane **ONLY** when the dividing line is broken.

## 7 True or False?

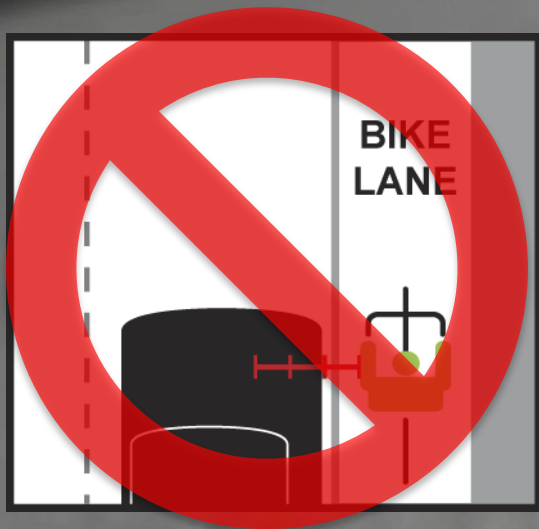
A motorist is entitled to drive right up to the dividing line of a bicycle lane and does not need to pass the bicyclist by at least three feet.



*Motorist may drive up to the edge of bicycle lane*

## 7 True or False?

A motorist is entitled to drive right up to the dividing line of a bicycle lane and does not need to pass the bicyclist by at least three feet.



*Motorist may drive up to the edge of bicycle lane*

ANSWER:

**FALSE!**

A bicycle lane does not alter the motorist's duty to pass a bicyclist with a safe distance. If other traffic prevents the motorist from moving sideways to provide enough passing distance, the motorist must wait for the traffic to clear.



## 8 True or False?

**Most collisions with pedestrians occur at night or when lighting is inadequate.**



*Pedestrians walking at dusk*



*Pedestrians walking at night*

## 8 True or False?

Most collisions with pedestrians occur at night or when lighting is inadequate.



*Pedestrians walking at dusk*



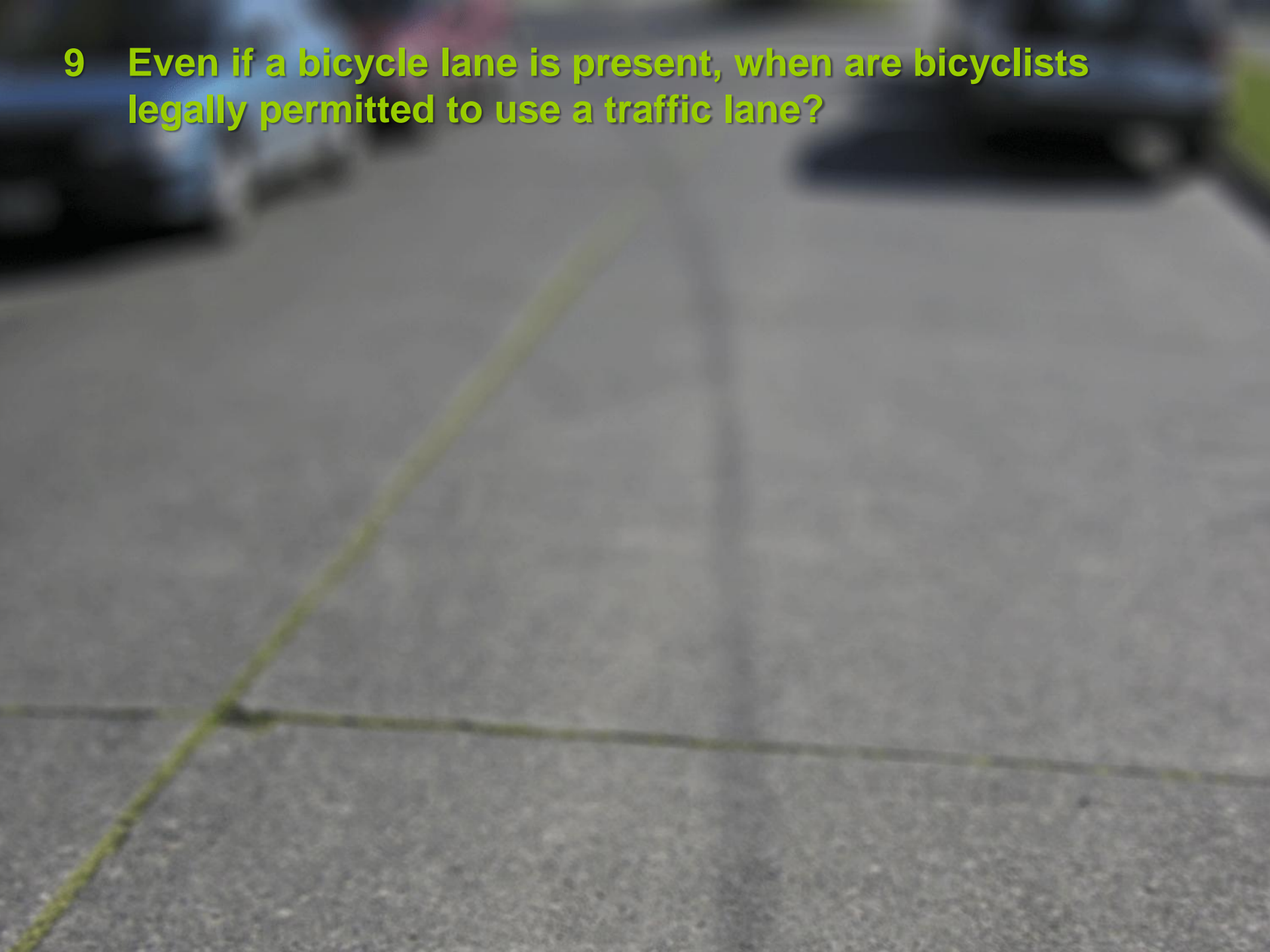
*Pedestrians walking at night*

**ANSWER:**

**True!**

**Most collisions with pedestrians occur at dawn, dusk, or night.**

**9 Even if a bicycle lane is present, when are bicyclists legally permitted to use a traffic lane?**

The background of the slide is a blurred photograph of a road. A yellow line on the left side of the road indicates a bicycle lane. A white line on the right side of the road indicates a traffic lane. The image is out of focus, showing the texture of the asphalt and the general layout of the road.

**9 Even if a bicycle lane is present, when are bicyclists legally permitted to use a traffic lane?**



- a. When two bicyclists are riding side-by-side

## 9 Even if a bicycle lane is present, when are bicyclists legally permitted to use a traffic lane?



- a. When two bicyclists are riding side-by-side



- b. When there are obstructions, glass, or other hazards in the bicycle lane

## 9 Even if a bicycle lane is present, when are bicyclists legally permitted to use a traffic lane?



- a. When two bicyclists are riding side-by-side



- b. When there are obstructions, glass, or other hazards in the bicycle lane



- c. When making a left turn or using a left turn lane

## 9 Even if a bicycle lane is present, when are bicyclists legally permitted to use a traffic lane?



a. When two bicyclists are riding side-by-side



b. When there are obstructions, glass, or other hazards in the bicycle lane



c. When making a left turn or using a left turn lane

d. ALL are correct

## 9 Even if a bicycle lane is present, when are bicyclists legally permitted to use a traffic lane?



- a. When two bicyclists are riding side-by-side



- b. When there are obstructions, glass, or other hazards in the bicycle lane



- c. When making a left turn or using a left turn lane

- d. ALL are correct

**ANSWER:**

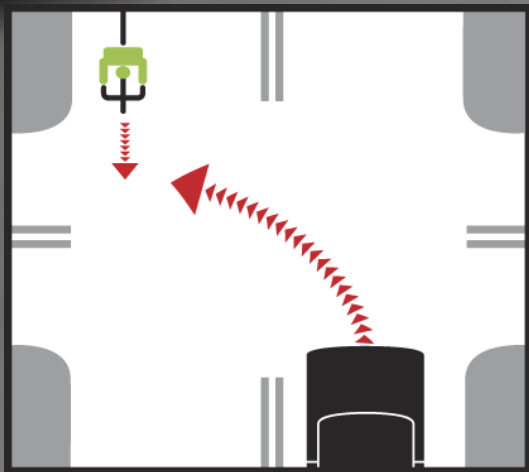
**d. ALL are correct!**

**Washington law allows bicycles to ride two-abreast and use traffic lanes in ALL of these situations.**

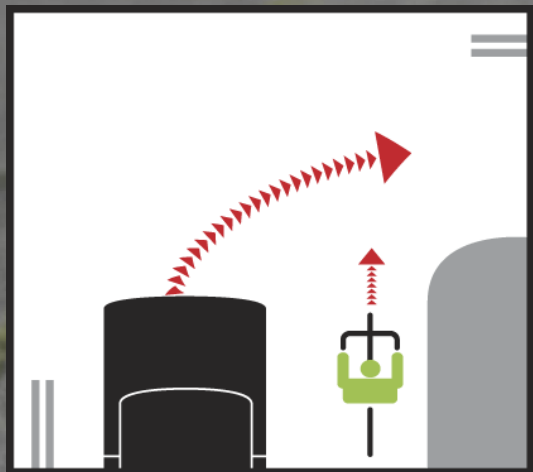


## 10 True or False?

**Motorists who are turning must yield to oncoming bicyclists.**



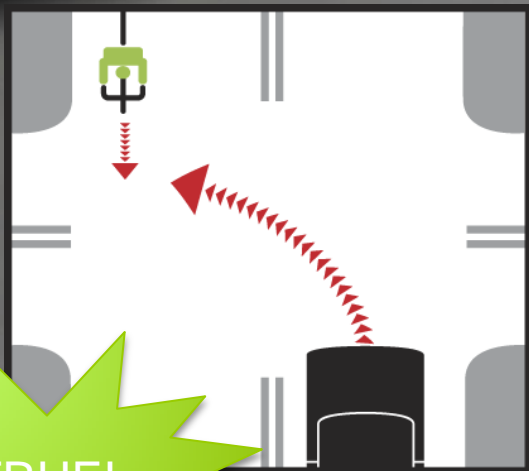
*Vehicle turning left  
while cyclist  
proceeds straight*



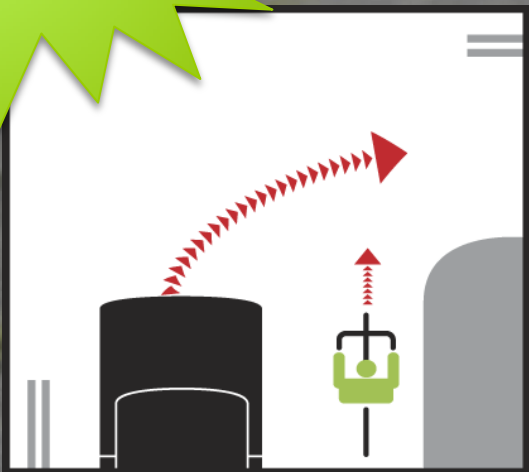
*Vehicle turning right  
while cyclist  
proceeds straight*

## 10 True or False?

Motorists who are turning must yield to oncoming bicyclists.



*Vehicle turning left  
while cyclist  
proceeds straight*



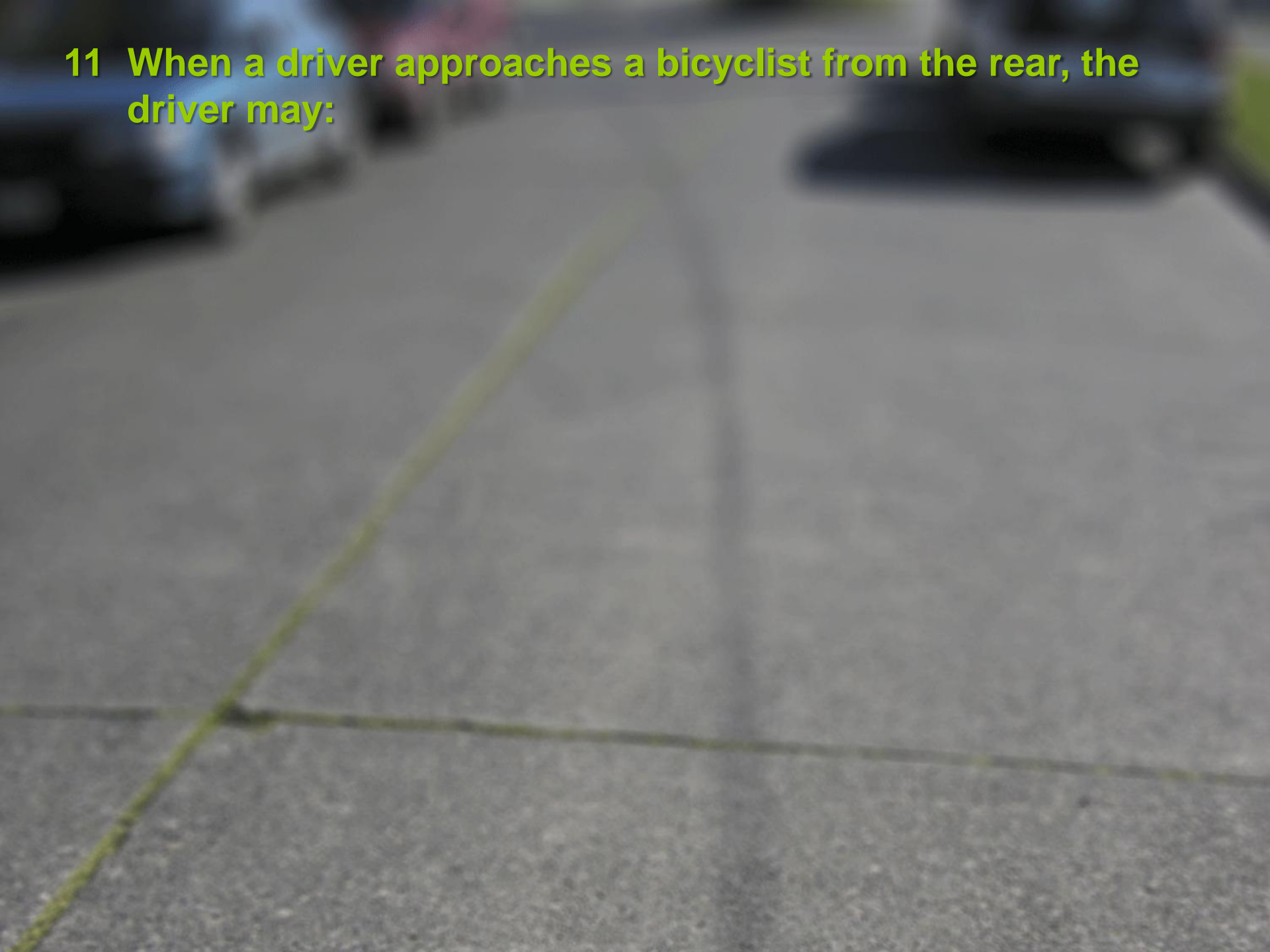
*Vehicle turning right  
while cyclist  
proceeds straight*

ANSWER:

**TRUE!**

Rushing a turn to beat a bicyclist is illegal and one of the leading causes of collisions and fatalities.

**11 When a driver approaches a bicyclist from the rear, the driver may:**



# 11 When a driver approaches a bicyclist from the rear, the driver may:



- a. Tell the bicyclist to ride on the sidewalk.

# 11 When a driver approaches a bicyclist from the rear, the driver may:



- a. Tell the bicyclist to ride on the sidewalk.



- b. Race the engine or honk to warn the bicyclist.

# 11 When a driver approaches a bicyclist from the rear, the driver may:



a. Tell the bicyclist to ride on the sidewalk.

b. Race the engine or honk to warn the bicyclist.



c. Wait to pass until the driver has at least 3 feet of clearance.

# 11 When a driver approaches a bicyclist from the rear, the driver may:



a. Tell the bicyclist to ride on the sidewalk.

b. Race the engine or honk to warn the bicyclist.



d. None are correct

c. Wait to pass until the driver has at least 3 feet of clearance.

**11 When a driver approaches a bicyclist from the rear, the driver may:**

**ANSWER:**

**C is correct!**

**Waiting to pass a bicyclist safely usually only takes a few seconds; honking or yelling at a bicyclist to show your displeasure is unlawful.**



- c. Wait to pass until the driver has at least 3 feet of clearance.



**12 What should a driver be alert to?**



## 12 What should a driver be alert to?



- a. A bicyclist riding into the street from a driveway or side street

## 12 What should a driver be alert to?



a. A bicyclist riding into the street from a driveway or side street



b. Opening a car door into the path of an oncoming bicyclist

## 12 What should a driver be alert to?



a. A bicyclist riding into the street from a driveway or side street

b. Opening a car door into the path of an oncoming bicyclist



c. A pedestrian who may be walking out from the front of a stopped car that you are passing

## 12 What should a driver be alert to?



a. A bicyclist riding into the street from a driveway or side street

b. Opening a car door into the path of an oncoming bicyclist



d. ALL are correct

c. A pedestrian who may be walking out from the front of a stopped car that you are passing

## 12 What should a driver be alert to?



a. A bicyclist riding into the street from a driveway or side street

b. Opening a car door into the path of an oncoming bicyclist



c. A pedestrian who may be walking out from the front of a stopped car that you are passing

d. ALL are correct

**ANSWER:**

**d. ALL are correct!**

**These are especially dangerous situations you need to anticipate.**

**13 What should a driver do when approaching an intersection that does not have a marked crosswalk but a pedestrian stands *about* to cross?**



**13 What should a driver do when approaching an intersection that does not have a marked crosswalk but a pedestrian stands *about* to cross?**



- a. Brake to a stop at least 20 feet before the intersection to allow the pedestrian to safely cross



**13 What should a driver do when approaching an intersection that does not have a marked crosswalk but a pedestrian stands *about* to cross?**



- a. Brake to a stop at least 20 feet before the intersection to allow the pedestrian to safely cross
- b. Continue without slowing since the pedestrian must wait until traffic clears

# 13 What should a driver do when approaching an intersection that does not have a marked crosswalk but a pedestrian stands *about* to cross?



- a. Brake to a stop at least 20 feet before the intersection to allow the pedestrian to safely cross
- b. Continue without slowing since the pedestrian must wait until traffic clears
- c. Honk to warn the pedestrian the car is proceeding without slowing

**13 What should a driver do when approaching an intersection that does not have a marked crosswalk but a pedestrian stands *about* to cross?**



- a. Brake to a stop at least 20 feet before the intersection to allow the pedestrian to safely cross
- b. Continue without slowing since the pedestrian must wait until traffic clears
- c. Honk to warn the pedestrian the car is proceeding without slowing
- d. NONE are correct

# 13 What should a driver do when approaching an intersection that does not have a marked crosswalk but a pedestrian stands *about* to cross?



- a. Brake to a stop at least 20 feet before the intersection to allow the pedestrian to safely cross
- b. Continue without slowing since the pedestrian must wait until traffic clears
- c. Honk to warn the pedestrian the car is proceeding without slowing
- d. NONE are correct

**ANSWER:**

**A is correct!**

All intersections have a "legal" crosswalk whether marked or not. If a pedestrian is about to enter the crosswalk you must yield to allow the pedestrian to cross.

14 Which statement is true about green colored “bike boxes” that are used in some cities?



## 14 Which statement is true about green colored “bike boxes” that are used in some cities?



- a. When the light is red, a motorist should stop at the stop line marked on the road at the back edge of the bike box

## 14 Which statement is true about green colored “bike boxes” that are used in some cities?



- a. When the light is red, a motorist should stop at the stop line marked on the road at the back edge of the bike box
- b. When the light is red or turning red, a bicyclist who is going through a intersection may position herself in the middle of the box ahead of a motor vehicle

## 14 Which statement is true about green colored “bike boxes” that are used in some cities?



- a. When the light is red, a motorist should stop at the stop line marked on the road at the back edge of the bike box
- b. When the light is red or turning red, a bicyclist who is going through a intersection may position herself in the middle of the box ahead of a motor vehicle
- c. A motorist should yield to a bicyclist in a bike box



## 14 Which statement is true about green colored “bike boxes” that are used in some cities?



- a. When the light is red, a motorist should stop at the stop line marked on the road at the back edge of the bike box
- b. When the light is red or turning red, a bicyclist who is going through a intersection may position herself in the middle of the box ahead of a motor vehicle
- c. A motorist should yield to a bicyclist in a bike box
- d. ALL are correct

# 14 Which statement is true about green colored “bike boxes” that are used in some cities?



**ANSWER:**

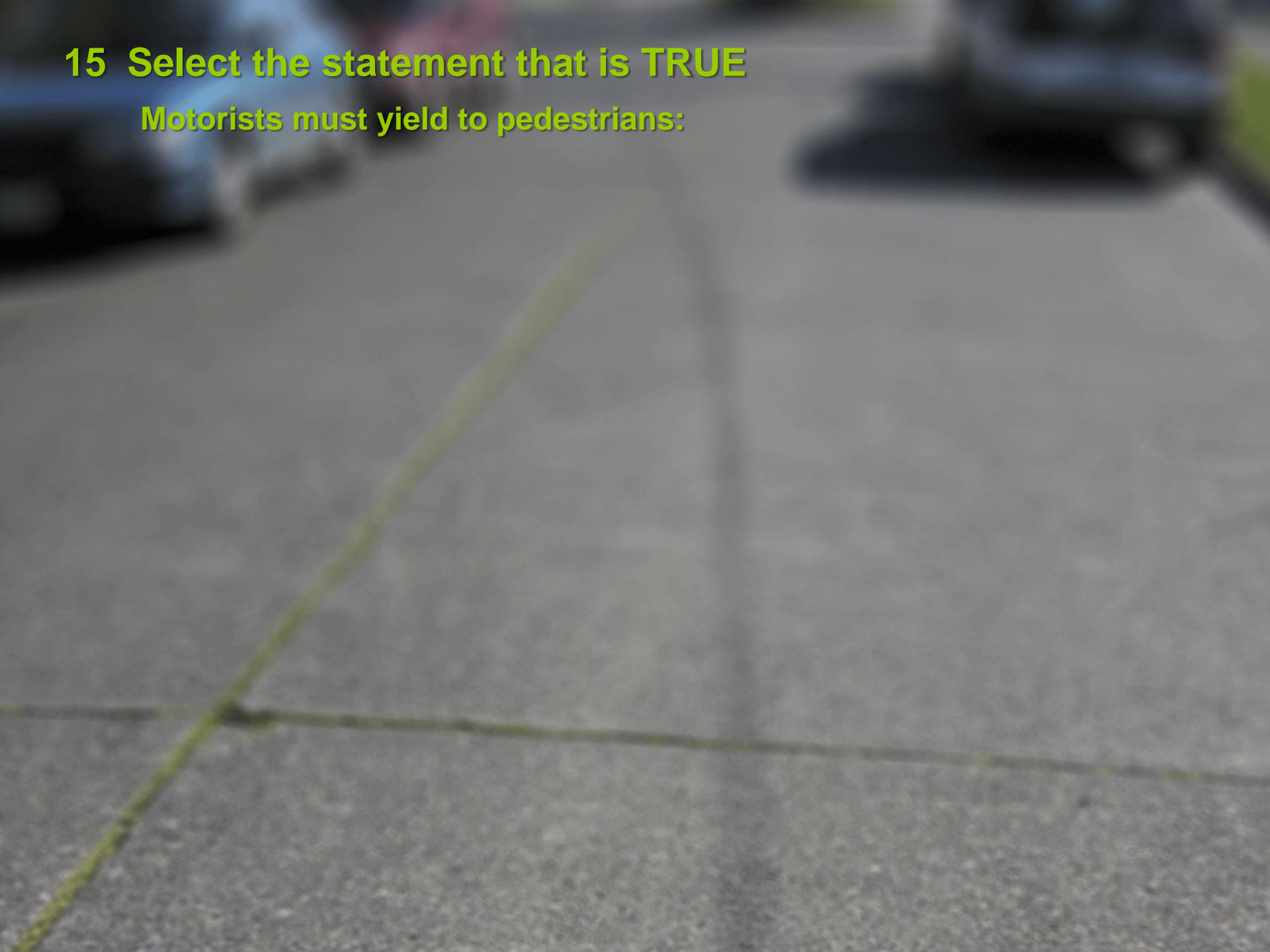
**d. ALL are correct!**

**Bike boxes give bicycles a safe and visible place to wait at intersections to reduce the chance of a vehicle turning into a bicyclist.**

- a. When the light is red, a motorist should stop at the stop line marked on the road at the back edge of the bike box
- b. When the light is red or turning red, a bicyclist who is going through a intersection may position herself in the middle of the box ahead of a motor vehicle
- c. A motorist should yield to a bicyclist in a bike box
- d. **ALL are correct**

**15 Select the statement that is TRUE**

**Motorists must yield to pedestrians:**



## 15 Select the statement that is TRUE

Motorists must yield to pedestrians:



- a. At intersections with marked crosswalks.

## 15 Select the statement that is TRUE

Motorists must yield to pedestrians:



a. At intersections with marked crosswalks.



b. At midblock without a marked crosswalk.

# 15 Select the statement that is TRUE

Motorists must yield to pedestrians:



a. At intersections with marked crosswalks.

b. At midblock without a marked crosswalk.



c. At intersections without a marked crosswalk.

# 15 Select the statement that is TRUE

Motorists must yield to pedestrians:



a. At intersections with marked crosswalks.

b. At midblock without a marked crosswalk.



d. ALL are true

c. At intersections without a marked crosswalk.

# 15 Select the statement that is TRUE

Motorists must yield to pedestrians:



a. At intersections with marked crosswalks.

b. At midblock without a marked crosswalk.



c. At intersections without a marked crosswalk.

d. ALL are true

ANSWER:

**d. ALL are true!**

**Regardless of right of way motorists must yield to avoid hitting a pedestrian.**



**16 Which of the following are common reasons a pedestrian is hit by a vehicle:**



## 16 Which of the following are common reasons a pedestrian is hit by a vehicle:



- a. A driver turning right only looks left, not seeing the pedestrian on the right

## 16 Which of the following are common reasons a pedestrian is hit by a vehicle:



a. A driver turning right only looks left, not seeing the pedestrian on the right



b. A driver turns left into a pedestrian because the driver only checked for oncoming traffic

## 16 Which of the following are common reasons a pedestrian is hit by a vehicle:



- a. A driver turning right only looks left, not seeing the pedestrian on the right



- b. A driver turns left into a pedestrian because the driver only checked for oncoming traffic



- c. A driver in a school zone does not watch for children who move unpredictably

## 16 Which of the following are common reasons a pedestrian is hit by a vehicle:



a. A driver turning right only looks left, not seeing the pedestrian on the right

b. A driver turns left into a pedestrian because the driver only checked for oncoming traffic

d. ALL are correct



c. A driver in a school zone does not watch for children who move unpredictably

## 16 Which of the following are common reasons a pedestrian is hit by a vehicle:



a. A driver turning right only looks left, not seeing the pedestrian on the right

b. A driver turns left into a pedestrian because the driver only checked for oncoming traffic



d. ALL are correct

ANSWER:

**d. ALL are correct!**

**Many pedestrian collisions can be prevented if drivers look for pedestrians at intersections and schools, and yield to pedestrians wanting to cross the street.**

c. A driver in a school zone does not watch for children who move unpredictably

How did you score?

15-16 correct

You passed with flying colors



**How did you score?**

**15-16 correct**

**You passed with flying colors**

**13-14 correct**

**You passed**





# How did you score?

15-16 correct

You passed **with flying colors**

13-14 correct

You passed

12 or below

**Try again**



**Driving safely among bicyclists and pedestrians may save a life or prevent a life-altering injury!**

